

Sang
Plus Sang
Gyeongin
National
University of
Education



GYEONGIN NATIONAL
UNIVERSITY OF EDUCATION

Gyeongin National University of Education

will present you with the wings
you need to soar toward your dreams.

You are spreading your wings toward your grand dream while imagining a tomorrow where your dream comes true

CONTENTS

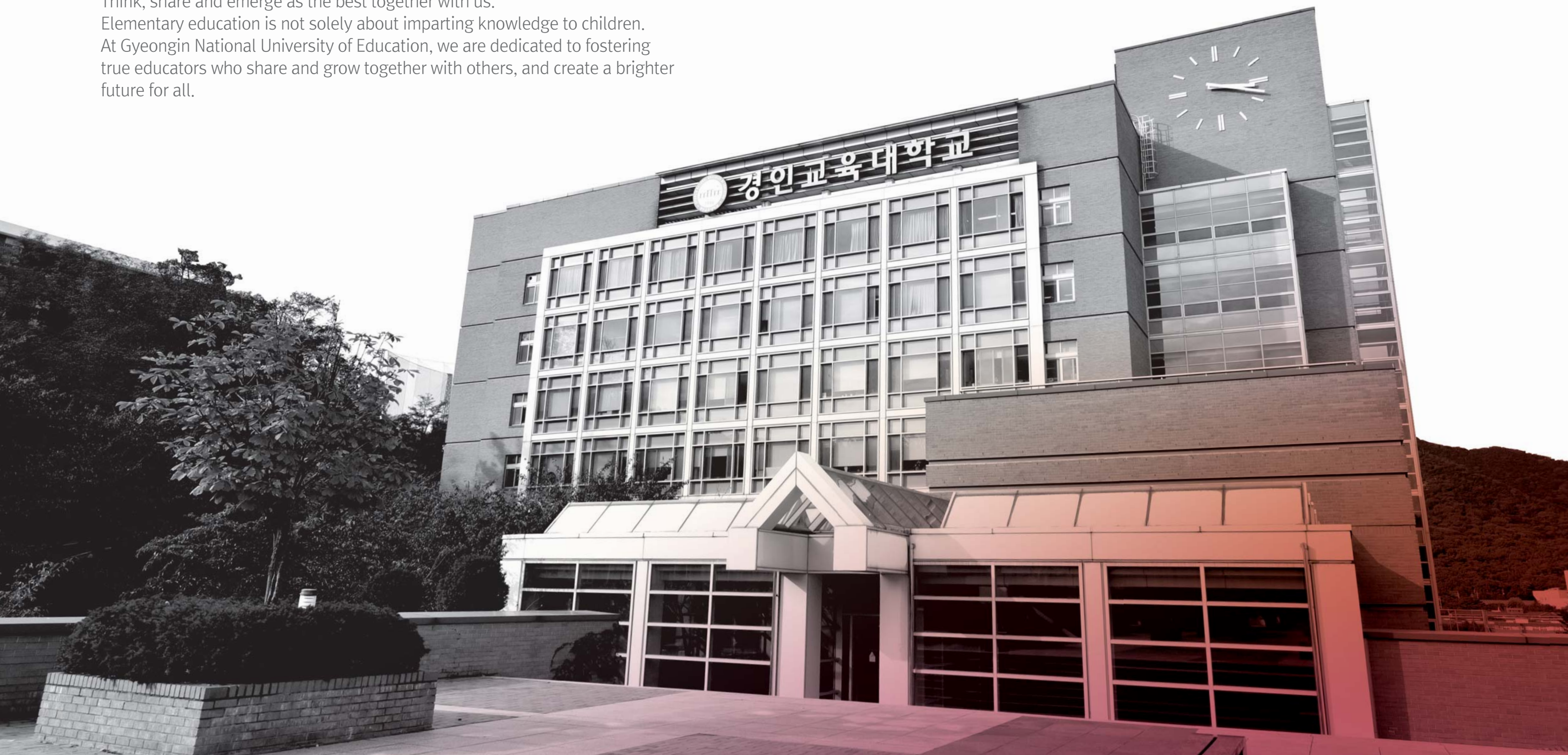
06	◆ President's Message	16	◆ Specialization	39	◆ Organization
08	◆ History	17	◆ Scholarships	40	◆ Affiliated Organizations
10	◆ Vision	18	◆ Academics	42	◆ Campus Guide
14	◆ Educational Achievements	34	◆ Graduate School of Education		
15	◆ Student Assistance Programs	38	◆ Development Fund		

Gyeongin National University of Education

with the passion **to turn imagination
into reality** and to realize the value of
every single student

GYEONGIN
NATIONAL
UNIVERSITY
OF EDUCATION

Think, share and emerge as the best together with us.
Elementary education is not solely about imparting knowledge to children.
At Gyeongin National University of Education, we are dedicated to fostering
true educators who share and grow together with others, and create a brighter
future for all.



President's Message



**Gyeongin National University of Education is
a Sangsang(上上:想像)^{PLUS} school.**

A good teacher does not make students out of his pupils.
A good teacher turns them into teachers for others.

〈Bernard Werber〉

I'd like to extend my sincerest welcome to the visitors of Gyeongin National University of Education (GINUE). GINUE was founded as Gyeonggi Provincial Gaeseong Normal School in 1946. Following the Korean War, our school was re-established as Incheon National School of Education in Incheon. Afterwards, the name of our school was changed to Incheon National University of Education and then to Gyeongin National University of Education in 2003.

Since the opening of our Gyeonggi campus in 2005, we have indisputably become one of the top universities training elementary school teachers and a world-class education and research institute. We have also been spurring efforts to develop a comprehensive teacher education system encompassing pre-school, elementary, and secondary education teacher training programs.

The founding philosophy of GINUE is based on 「Great Power」, which means to orient toward specialized elementary education and academic excellence, 「Great Love」, which is to practice love toward all living beings, courtesy toward others, and mutual respect, and 「Great Light」, which is to benefit the entire world by taking a leadership role in education that promotes communication and connection. Based on this philosophy, we foster competent and virtuous educators who contribute to human society.

At GINUE, we are taking a multi-faceted educational approach to better assist our students in gaining excellent character and professional expertise and competency as elementary education teachers in this post-human era, where emphasis is placed on "connection", "communication", "intellect," and "convergence". We are also endeavoring to create an education community, where our faculty members can dedicate themselves to education and research and our staff can work enthusiastically and unleash their professional potential. I ask for your continued support and encouragement so that the spirit of our education community can spread far and wide across the world.

Thank you.

A century-old cradle of education for teachers

GINUE is a university of education that creates hope for Korea



2017	08. 28	◆	'The Journal of Education' issued by GINUE Education Research Institute listed in KCI Candidate Journals
	06. 30		Received Excellent Institution Citation based on the 2017 National University Library Evaluation
	06. 14		GINUE Korea Multicultural Education and Research Institute received Presidential Citation on the 10th Together Day
	06. 09		Selected for the Global Teachers' University for 6 consecutive years
	05. 02		Selected for the Support Program for Universities Contributing to the Normalization of High School Education (2017) for 4 consecutive years
			Selected for the National University Innovation Support Program (2017) for 3 consecutive years
	04. 07		Inauguration of Ko Dae-hyuk as the 7th President of GINUE
	01. 18		GINUE International Exchange Center awarded Minister of Justice Citation
2016	03. 26	◆	70th Anniversary of the Founding of GINUE
2015	03. 24	◆	An event held to commemorate the 10th anniversary of the establishment of GINUE Gyeonggi Campus
2014	08. 20	◆	Held an international conference to commemorate the 2014 Asian Games in Incheon and the 1988 Summer Olympic Games
2013	04. 17	◆	Inauguration of Lee Jae-hee as the 6th President of GINUE
2012	11. 15	◆	Received approval for the establishment of Graduate School of Education (Ph.D. program)
	08. 06		Secured the properties (land & buildings) to establish the Gyeonggi Campus
	07. 04		Selected for the Global Teachers' University Support Program
2011	02. 16	◆	Selected as Excellent University in the Low-carbon Green Campus Evaluation
2010	11. 23	◆	Won the Special Prize at the 2nd After School Awards (Excellent Institution among non-profit corporations)
2009	04. 20	◆	Selected for the University Education Capacity Building Program
	03. 31		Inauguration of Jeong Dong-gwon as the 5th President of GINUE
2008	05. 10	◆	Selected for Excellent University in the Creative Korea Project in the Seoul Capital Area for 5 consecutive years
2007	02. 08	◆	Selected as Top Excellent University and Top Excellent Graduate School based on the Teacher Training Institute Evaluation conducted by the Ministry of Education & Human Resources Development
2005	03. 31	◆	Inauguration of Heo Suk as the 4th President of GINUE
	03. 01		Opening of Gyeonggi Campus
2004	05. 18	◆	Opened the Distance Education and Training Support Center as an affiliated organization
2003	03. 01	◆	Changed the school name to "Gyeongin National University of Education (GINUE)"
2002	09. 28	◆	Ranked No.1 a nationwide university of education evaluation conducted by JoongAng Ilbo
2000	11. 15	◆	Selected as Top Excellent University in the National Education University and Graduate School Evaluation supervised by the Ministry of Education
1998	10. 02	◆	Ranked No.1 a nationwide university evaluation conducted by JoongAng Ilbo
1996	03. 02	◆	Opened the Incheon National University of Education Graduate School of Education
1995	08. 16	◆	Opened the Lifelong Education Center
1993	03. 01	◆	Changed the school name to Incheon National University of Education
1990	07. 30	◆	Relocated the campus to Gyesan-dong
1982	03. 01	◆	Promoted to the status of "4-year university"
1962	03. 26	◆	Opening of Incheon National University of Education
1952	06. 28	◆	Changed the school name to "Incheon National Normal School" and obtained approval to change the campus location
1946	05. 23	◆	Obtained approval to establish Gyeonggi Provincial Gaeseong Normal School

Training Leaders in Education with Creativity and Integrity

Train Education Leaders
with Creativity and Integrity

[Definition of Education Leaders]

Armed with creativity (intellect), character, and global leadership skills

Core Values

The core values of the students, faculty and staff of GINUE are innovation, creativity, excellence, communication, and care. These core values serve as the very foundation upon which we will attain our vision and goals.

Innovation	We seek continuous development without falling into complacency.
Creativity	We think and work from new perspectives.
Excellence	We perform our duties in accordance with the highest standards.
Communication	We create synergy by communicating with one another.
Care	We try to understand and be considerate of others.

Top 5 Strategies

The top 3 core responsibilities of a university are to provide education, conduct research, and serve the community. GINUE has set forth a vision and goals to fulfill these responsibilities, and to this end, five major strategies have been established.

- 1/ Run programs to train creative teachers who will lead the future of education
- 2/ Carry out research and development projects that drive forth innovation in education and help attain the vision of education
- 3/ Run tailored programs that support the professional growth of the faculty members
- 4/ Establish and run an education community by networking with the local community members
- 5/ Form a global network for sustainable education development



Key Tasks for Each Strategy

Run programs to train creative teachers who will lead the future of education

- 1/ Implement curricula that reflect the core competencies that will be demanded by society in the future
- 2/ Run creative teaching and learning programs to nurture the creative education capacity
- 3/ Run programs that boost the competency to provide day-to-day guidance
- 4/ Reinforce practicums that are tailored to the field
- 5/ Operate the education capacity building programs for students with educational needs

Carry out research and development projects that drive forth innovation in education and help attain the vision of education

- 1/ Conduct R&D on creative teaching methods and share the results
- 2/ Collect, develop and share diverse educational content
- 3/ Develop a futuristic school model (convergence of preschool–elementary–secondary education / community education involving families, schools and the local community)
- 4/ Improve the research capacity of the students of the Graduate School of Education
- 5/ Create the optimum research conditions and culture

Run tailored programs that support the professional growth of the faculty members

- 1/ Provide teacher-oriented training services
- 2/ Support the training of teachers as professional learning community
- 3/ Run diverse distance training programs
- 4/ Run region-specific teacher training programs
- 5/ Run programs to boost the competency of future education leaders (administrators and civil servants working for municipalities)

Establish and run an education community by networking with the local community members

- 1/ Strengthen cooperation in the regional education programs and projects of municipalities and the Offices of Education
- 2/ Provide learning, welfare and sporting facilities to the local residents by operating the Edu-Park
- 3/ Operate an open counseling center for the members of the local community (incl. therapy centers for learning disabilities, and emotional and behavioral therapies)
- 4/ Support the operation of the “Free Learning Year” System at local schools
- 5/ Reinforce the education volunteer activities of prospective teachers to strengthen their teaching competency

Form a global network for sustainable education development

- 1/ Reinforce international exchange and cooperation with higher education institutes abroad
- 2/ Operate joint degree programs with foreign universities
- 3/ Train foreign faculty members and support their job seeking activities
- 4/ Run an international education development and cooperation (ODA) program
- 5/ Operate elementary education training practicums at overseas universities and overseas mentoring programs at a larger scale

Sangsang(上上^{plus}) to be the best!

One of Korea’s most prominent universities nurturing top elementary school teachers

With faculty members who conduct field research and boast outstanding teaching competency and extra-curricular programs, GINUE serves as a cradle for excellent elementary education providers that helps them grow into education leaders with excellent character.



Selected as Top Excellent University of Education and Top Excellent Graduate School of Education



One of the top universities in terms of faculty research



Consistently selected in government-funded support programs

Selected as Top Excellent University of Education and Top Excellent Graduate School of Education

GINUE has earned the title of “Top Excellent University of Education” from the Ministry of Education and press and media agencies the most out of all of the education universities in Korea, gaining a reputation as the “best university of education” in Korea.

Top-notch research performance by the faculty members / “The Journal of Education” by GINUE Education Research Institute listed in KCI Candidate Journals

GINUE has been listed as one of the top universities in terms of the “number of research papers presented (published) per professor” and “number of cited papers” for 3 years in a row

Selected for the Support Program for Universities Contributing to the Normalization of High School Education for 4 consecutive years

Since 2014, GINUE has been selected for the Support Program for Universities Contributing to the Normalization of High School Education supervised by the Ministry of Education, and implementing a wide range of contribution projects ever since.

Designation as a Global Teachers’ University

GINUE became the first university to be selected for the Global Teachers’ University Support Program (2012) implemented by the Ministry of Education, and has been carrying out related projects for the past 6 years

Selected for the National University Innovation Support Program for 3 consecutive years / Selected for the University for Creative Korea (CK) in the Seoul Capital Area (SCA) for 2 consecutive years

INNOVATION We are running a wide range of educational events and educational welfare programs to train teachers with excellent education capacity among students with educational needs.

CK Specialized to boost the education capacity in extracurricular areas (career path guidance, safety education, etc).

Sangsang(相想^{plus}) to share the value of togetherness

A university that promotes the value of togetherness with love and care for others

GINUE will help you reach your ideals and dreams and even prepare for the distant future.



Programs in Connection with High Schools



Programs in Connection with New Students



Programs in Connection with the Local Community

Mock Programs with GINUE

We not only provide admission information, but also an opportunity for high school students to experience a mock interview to better prepare for college admission.

A Mobile Admission Bridge

We dispatch our staff to high schools in remote areas to provide practical information on GINUE admission as a means to provide equal educational opportunities.

Student Home-coming Program

We send our current students to their former high schools to encourage their juniors to enroll in an education university and to provide them with a career exploration opportunity.

JUMPING CAMP

We allow prospective students to experience the campus life beforehand, and prospective elementary school teachers to gain teaching experience.

Tok-tok Mentoring

We run a tailored mentoring program for new students to help them adapt to college life as soon as possible.

Teacher Training Program for Undergraduate Programs at Teacher Training Universities

We offer teacher training programs to share the admission results and evaluation methods of universities that train teachers.

GINUE Admissions Information Sessions

We provide admission information to prospective students and their parents.

Mentoring Program for Vulnerable Students / Multicultural Education Programs

We run mentoring programs to assist vulnerable students in learning and to provide them with life guidance. / We offer classes for migrant workers and their families and multicultural families.

Sangsang(想像^{plus}) to lead the world

A university serving as a cradle of global leaders based on the principle of Sangsang

Nurturing Global Leadership Based on Specialized Education

GINUE is carrying out specialization programs to nurture “true teachers” with excellent teaching competency, character, and global leadership skills for our future generations



Creative Education Leaders

Creative Education Leaders

We foster leaders in education with creativity and professional expertise as educators by cultivating their self-directed learning skills and the ability to converge and apply their knowledge.



Education Leaders with Good Character

Education Leaders with Good Character

We foster leaders in education who are open-minded, embracing and tolerant of others, and relationship-oriented



Global Education Leaders

Global Education Leaders

We foster leaders in education with world-class competencies who can lead and communicate with the global community.

GINUE produces

talented individuals with excellent character and professional expertise

Scholarships offered to more than 80% of the student population

To make sure that students are not held back by financial difficulties, GINUE offers scholarships to around 80% of its students, and implements a wide variety of scholarships and student loan programs. National scholarships, GINUE scholarships, the Development Fund Scholarship and various other internal and external scholarship programs help students on their journey toward their grand dreams.

Scholarships

National Scholarships

Scholarships given to students selected by the State or in accordance with the relevant laws

National Excellence Scholarship (Science & Engineering, and Liberal Arts)

National Scholarship (types I & II)

Student Loans

Loans for Rural Students

Deun-Deun Loan

Living Expense Loan

External Scholarships

Mokjeong Scholarship Exemplary students from low-income families with excellent grades

Scholarship from Saeul Foundation of Culture

Students from Incheon with excellent grades

Cheonman Scholarship, etc.

Development Fund Scholarship

Scholarships given using the Development Fund of GINUE

GINUE Scholarships

Scholarships given using the financial resources of GINUE

Great Power Scholarship

Given to the top student of the same year level

Great Love Scholarship

Given to the top student of each class

Great Light Scholarship

Given to the second top student of each class

Sarang Nanum Scholarship

Given to students from low-income families

Educational Donation Scholarship

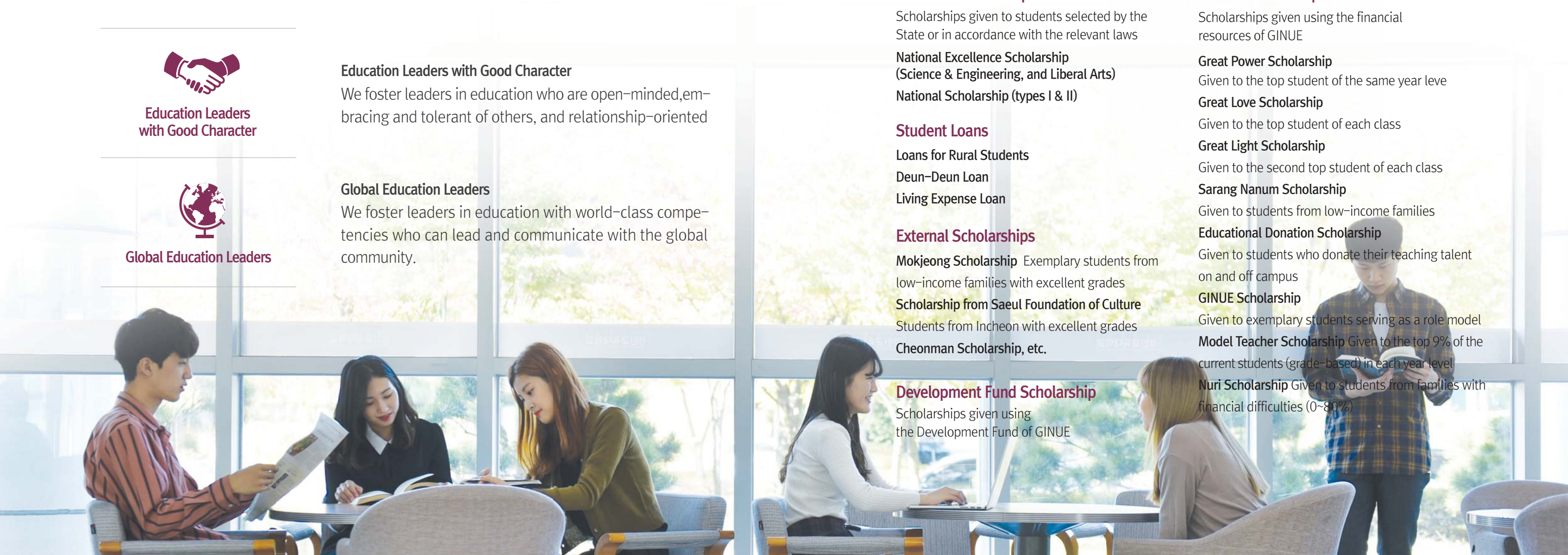
Given to students who donate their teaching talent on and off campus

GINUE Scholarship

Given to exemplary students serving as a role model

Model Teacher Scholarship Given to the top 9% of the current students (grade-based) in each year level

Nuri Scholarship Given to students from families with financial difficulties (0~80%)



By spreading your wings, you can create a future that everyone dreams of!

Are you wondering how you could become a true teacher?
You can make your dream come true with GINUE.
Join us to follow your heart and move toward the future you've been dreaming of.



Department of Ethics Education

The Department of Ethics Education aims to provide moral education to students. The curriculum includes theories of moral education, teaching tools for moral education, an understanding of philosophy and ethics, an understanding of the theories related to North Korea and a united nation, and an understanding of the theories and methodologies concerning human nature and social sciences. These courses include all-encompassing education areas related to education that promotes morality and character development. Through the programs, students will better understand the existence of morality in our society and gain the skills necessary to educate democratic citizens.



Department of Korean Education

The objective of the Department of Korean Education is to nurture educators specializing in elementary Korean language education. To this end, students familiarize themselves with the academic knowledge and inquiry methods to teach listening, speaking, reading, and writing skills as well as grammar and literature to elementary school students to improve their thinking and learning skills, and apply their knowledge and skills in an actual elementary school setting. The intensive curriculum includes understanding and expression of the Korean language, grammar, literature, and use of the media. Through these courses, students develop the qualities required of professional teachers who can help elementary school students develop reading and writing skills, in addition to the ability to communicate in an accurate and creative manner.



Department of Social Studies Education



The Department of Social Studies Education aims to nurture competent specialists in elementary social studies education, who can help elementary school students gain the knowledge and skills they need as members of society, accurately recognize social phenomena, and develop the qualities and competencies of democratic citizens. For this purpose, the curriculum has been designed to include three major areas: general social studies education, geography education, and history education. Students in this department get equipped with academic knowledge and inquiry methods across the three aforementioned areas, based on which they are taught how to apply the pedagogical theories and methods in an actual elementary education setting.



Department of Mathematics Education



The objective of the Department of Mathematics Education is to foster self-directed and creative elementary mathematics educators who research and understand the basic concepts, principles, and rules of mathematics dealt with in elementary school settings. In addition to gaining the ability to solve diverse mathematical problems, students also gain a habit of considering various day-to-day events and phenomena from the mathematical perspective. At the same time, they gain a richer and more in-depth understanding of mathematical content and pedagogy, thereby becoming elementary school teachers with a firm view of teaching and excellent teaching competencies.



Department of Science Education



In the Department of Science Education, students learn the theories and skills pertaining to the elementary science education curriculum through hands-on experiences so that they can effectively teach science subjects in elementary schools. With a focus on scientific inquiry activities, students observe and manipulate specific objects and phenomena for in-depth learning of natural sciences. Also, they are taught to discover and solve day-to-day problems on their own, and they get to further improve their qualifications as elementary school teachers through the intensive courses.



Department of Physical Education



In the Department of Physical Education, students are given in-depth theoretic education and practical training in order to better understand the essence of physical education and develop the qualifications they need to become competent elementary physical education teachers. Students are instructed to promote the value of physical activity through integrated teaching and learning activities and the use of efficient teaching and learning methods in the areas of health, competition, expression, and safety. The general curriculum consists of Physical Education Theory (I & II), Physical Education Practice (I & II), and Physical Expression Activities, while the intensive curriculum includes Physical Activity and Basic Skills, Physical Activity Instruction Methods, Elementary Dance Education, Physiology of Childhood Sports, Exercise and Health, Psychology of Childhood Sports, Sports and Social Sciences, Physical Education Curriculum, Elementary Physical Education Evaluation, and various practical training courses.



Department of Music Education

In the Department of Music Education, the curriculum consists of diverse courses that deal with the theories and practices of Western and Korean music as well as music pedagogy in depth for the purpose of equipping students with the necessary qualifications of elementary music teachers in addition to an understanding of music. Also, the department has specialized divisions focusing on wind instruments, string instruments, piano, gugak (traditional Korean music), vocal music, music composition, and music education, where students can receive professional trainings in the area of interest. This helps students further develop their practical skills in that specific area. They are also provided with guidance to write their graduation thesis or to pre-prepare for the graduation performance.



Department of Art Education

The Department of Art Education aims to promote professional skills in art instruction and cultivate the general research skills in the area of fine art pedagogy. In order to cultivate research skills, a wide range of courses have been established, including Childhood Art Analysis and Research, Art Therapy, Cognitive Theories in Art Education, History of Art Education, Visual Culture and Art Education, and Art Education and Research Methodologies. Through these courses, students gain theoretical knowledge and skills that enable them to carry out academic and empirical research. In addition, their professional instruction skills are further reinforced through other courses on Korean painting, Western painting, sculpture, craft, design, and calligraphy.



Department of Practical Science Education

The aim of the Department of Practice Science Education is to nurture elementary practical science education experts through inquiry-based theory education as well as practical application of the theories concerning practical science pedagogy. Through actual experiences and the acquisition of problem-solving skills, students learn how to learn and teach various aspects of practical science education and acquire high-level practical skills in each field. The curriculum centers life sciences, home education, technical studies, information science, career education, environmental education, as well as Practical Arts education in relation to curriculum, teaching and learning methods, evaluation, and research methodologies.



Department of Computer Education

The Department of Computer Education aims to nurture experts in the area of elementary software education in preparation for the Intelligent Information Society along with the advent of the Fourth Industrial Revolution. For this purpose, diverse courses for the development of computational thinking (CT) skills are offered. In addition to practical education in the computer lab on software coding, physical computing, and digital education equipment and materials (e.g. 3D printers, drones, etc.), theoretical education is provided in parallel for the students to understand the core concepts of computer science and become better prepared for the future.



Department of Education



The objective of the Department of Education is to nurture competent elementary school teachers who can contribute to the development of education by equipping them with the basic knowledge and skills related to the educational phenomena in elementary schools and research on the issues with education. For this purpose, the department offers a curriculum that helps students understand the phenomena and issues in the current education system and solve the problems; Courses include theories of character education, education for gifted children, special lectures on elementary pedagogy, teaching and learning methodologies, education research and statistics, education measurement and evaluation, society, culture and education, theory of education reform, theories and actuality of education administration, inquiries on the issues of elementary education, history of elementary education, and contemporary trends in education. Students get to broaden their educational view, gain a deeper understanding of education, and acquire the skills to resolve educational issues in the field and contribute to the development of the education sector.

Department of Special (Inclusive) Education



The Department of Special (Inclusive) Education was newly established in 2012, with the aim of fostering professional teachers who can proactively deal with the numerous issues that have been arising at schools in recent years. The focus is on children with mental or pathological issues who may potentially cause school violence, special children such as gifted children and children with disabilities, children with low basic-academic skills and all other children with various abilities and unique characteristics. The department produces leading teachers, who can administer classes taking into account individual differences among children from diverse groups by employing various teaching methods including the multi-level inclusive instruction.



Department of Early Childhood Education



The Department of Early Childhood Education aims to deal with the theories and practices of instructing elementary school students in the lower grades, with a focus on bridging kindergarten and elementary school education more efficiently. An intensive program pertaining to early childhood education is in place to help prospective elementary school teachers improve their qualifications to teach students in the lower grades. The curriculum includes a child-oriented education course, kindergarten and elementary school education linking methodology, developmental theory, early childhood language instruction, early childhood mathematics instruction, early childhood science instruction, early childhood education method, infant creativity education, early childhood social studies education, parental education, and early childhood art education.

Department of English Education



The Department of English Education was established in 1994 around the time when elementary English education became compulsory. Based on a mission to nurture competent teachers who can provide elementary English instruction and lead the advancement of elementary English education in Korea, the department has been educating and researching the theories and practices of elementary English education. The curriculum aims to help students gain basic knowledge about English subject. Courses such as basic theories in English linguistics, English and American literature, and children's literature provide a foundation of English language studies. Students are also offered opportunities to learn theories and teaching methods in the field of English education, and explore the possibility of applying them in the actual field through various courses.

Opening Up New Horizons with Passion

GINUE is opening up new horizons in the education sector by producing competent teachers who will contribute to the advancement of elementary education of Korea, boost their professional expertise, and take a leadership role in the field.

[Graduate School of Education]

The Graduate School of Education opened its doors on March 2, 1996, with the aim of producing excellent professionals in the field of elementary education and contributing to the advancement of elementary education in Korea. It obtained approval to be promoted to the status of “graduate school of education” on November 15, 2012. It currently has 18 students each year for 11 doctoral degree programs, and 647 students for 26 master’s degree programs.

[Specializations]

Master’s Degree Programs Educational Administration, Educational Methods, Special Education, School Counseling, Early Childhood Education, Ethics and Character Education, Korean Language Education, Elementary Social Studies Education, Elementary Mathematics Education, Elementary Science Education, Physical Education, Music Education, Elementary Art Education, Life Sciences Education, Computer Education, Elementary English Language Education, Korean Language Education, Education for Gifted Students in Mathematics, Education for Gifted Students in Science, Multicultural Education, Museum and Art Museum Education, Convergence Education, Political and Civic Education, Career Education and Counseling, Early Childhood Education Institution Management, and Global Teacher Education.

Doctoral Degree Programs Elementary Educational Administration, Elementary Educational Methods, Elementary Korean Language Education, Elementary Social Studies Education, Elementary Mathematics Education, Elementary Science Education, Elementary Physical Education, Elementary Music Education, Elementary Art Education, Elementary Computer Education, Elementary English Language Education.

2017	08.31	◆	The 39th Master’s Degree Conferment Ceremony (186 recipients of a master’s degree in education : 4,758 graduates in total; 4 recipients of a doctoral degree in education, 4 people in total)
	03.01		The 1st Doctoral Degree Conferment Ceremony (4 recipients of a doctoral degree in education, 4 people in total)
	02.10		Inauguration of Kang Mun-bong (Ph.D. in education) as the 14th Dean of the Graduate School of Education
2016	11.01	◆	The 38th Master’s Degree Conferment Ceremony (199 recipients of a master’s degree in education: 4,572 graduates in total)
			Approval for the establishment of two additional master’s degree programs (admission quota: 18 students for doctoral degree programs and 647 students for master’s degree programs)
			Establishment of the Career Education and Counseling Program and the Early Childhood Education Institution Management Program, and renaming of “Elementary Korean Language Education” to “Korean Language Education” and from “Elementary Education Methods” to “Education Methods”
2015	08.31		The 37th Master’s Degree Conferment Ceremony (186 recipients of a master’s degree in education: 4,373 graduates in total)
	02.12		The 36th Master’s Degree Conferment Ceremony (160 recipients of a master’s degree in education : 4,187 graduates in total)
	10.27	◆	Approval for the establishment of two additional doctoral degree programs and one master’s degree program (admission quota: 18 students for doctoral degree programs and 647 students for master’s degree programs)
			Doctoral degree programs (Elementary Physical Education and Elementary Computer Education) and master’s degree program (Political and Civic Education)
			Renaming of a master’s degree program from “Elementary Education Administration” to “Educational Administration”
			Renaming of a master’s degree program from “Convergence and Human Resources Education” to “Converge Education”
	08.31		The 35th Master’s Degree Conferment Ceremony (192 recipients of a master’s degree in education: 4,027 graduates in total)
	03.01		Inauguration of Yeo Sang-in as the 13th Dean of the Graduate School of Education
	02.13		The 34th Master’s Degree Conferment Ceremony (228 recipients of a master’s degree in education: 3,835 graduates in total)
2014	08.29	◆	The 33rd Master’s Degree Conferment Ceremony (160 recipients of a master’s degree in education: 3,607 graduates in total)
	03.01		Renaming of a master’s degree program from “Elementary Practical Science Education” to “Practical Science Education”
	02.14		The 32nd Master’s Degree Conferment Ceremony (165 recipients of a master’s degree in education: 3,447 graduates in total)
2013	11.13	◆	Establishment of the Elementary Social Studies Education, Elementary Music Education and Elementary Art Education programs
			Approval for three additional doctoral degree programs (admissions quota: 18 students)
	08.30		The 31st Master’s Degree Conferment Ceremony (121 recipients of a master’s degree in education: 3,282 graduates in total)
			Renaming of a specialization from “Elementary Special Education (GTU Program)” to “Global Teacher Education”
			Renaming of a specialization from “Elementary Morality Education” to “Ethics and Character Education”
			Inauguration of Kim Jeong-hee, Ph.D., as the 12th Dean of the Graduate School of Education
2012	02.15		The 30th Master’s Degree Conferment Ceremony (163 recipients of a master’s degree in education: 3,161 graduates in total)
	11.15	◆	Approval of the Graduate School of Education, with 6 doctoral degree specializations (admissions quota: 18 students), and 22 master’s degree specializations with the establishment of Elementary Educational Administration, Elementary Educational Methods, Elementary Korean Language, Education, Elementary Mathematics Education, Elementary Science Education, Elementary English Education (admissions quota: 647 students)
2011	11.11	◆	Approval of an increase in the number of master’s degree specializations to 22 (admissions quota: 674 students), with the establishment of Multicultural Education, Museum and Art Museum Education, and Convergence and Human Resources Education
2010	11.11	◆	Approval of an increase in the number of master’s degree specializations to 19 (admissions quota: 640 students), with the establishment of Korean Language Education, Education for Gifted Students in Mathematics, and Education for Gifted Students in Science
2007	02.06	◆	Selection as Top Excellent Graduate School of Education based on the Evaluation of Graduate School of Education at Universities of Education Nationwide
2005	10.24	◆	Approval of an increase in the number of master’s degree specializations to 16 (admissions quota: 305 students), with the establishment of Early Childhood Education
2000	11.15	◆	Selection as Top Excellent Graduate School of Education based on the Evaluation of Graduate School of Education at Universities of Education Nationwide supervised by the Ministry of Education
1999	11.19	◆	Approval of an increase in the number of master’s degree specializations to 15 (admissions quota: 305 students), with the establishment of Elementary School Counseling
1998	11.16	◆	Approval of an increase in the number of master’s degree specializations to 15 (admissions quota: 245 students), with the establishment of Special Education
1996	03.02	◆	Opening of the Graduate School of Education (4 master’s degree specializations; admissions quota: 80 students), with Educational Administration (20 students), Korean Language Education (20 students), Mathematics Education (20 students), and Science Education (20 students)
1995	11.10	◆	Approval for the establishment of a graduate school of education



The sweat you shed today will be a catalyst for a better tomorrow!

The dreams you have alone may stay as a dream, but the dreams you have with others will turn into reality. To help you realize your infinite potential and grow into a competent professional, GINUE will be by your side every step of your journey. GINUE will be the very soil where you can grow your rose-colored dreams.



Leave your beautiful name
as part of the history
of GINUE



Development Fund of GINUE

Let's Be Together

Enjoy the romantic air on campus at the beautiful green square.
Your valuable contribution will be left wherever people's eyes lay
and wherever they stop in their tracks. (New scholarship in the name of
the donor), (Insert the name in the park bench) Families, alumni and campus
couples can leave their messages on the campus park benches.



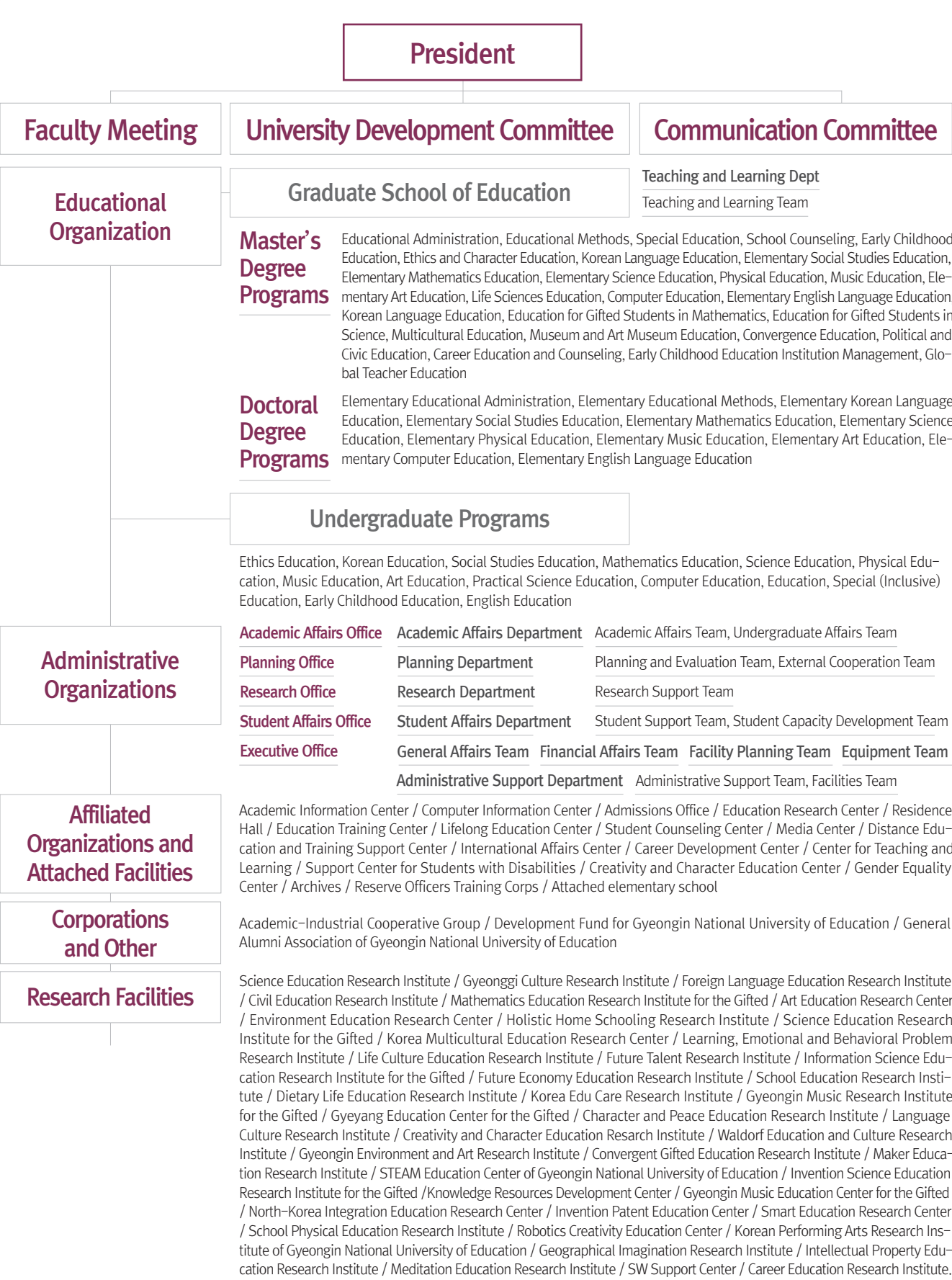
Development Fund of GINUE

Let's Share

We can share our dreams with less than KRW 10,000.
How about creating a butterfly effect by sharing?

Bank account 518401-01-244240(Kookmin Bank) GINUE Development Fund
Inquiries GINUE External Cooperation Team **Tel** +82-32-540-1293

Organization



Attached Organizations

Academic Information Center

The Academic Information Center collects and processes specialized information that meets the purpose of the university, which is to foster elementary school teachers. It provides a wide range of academic information services based on digital platforms through which the desired resources can be used anytime, anywhere. The center also operates a video archive, school project production lab, and comprehensive information search room.

Computer Information Center

The Computer Information Center is in charge of informatization planning and information services which include providing information technologies to support the research and teaching or learning activities of the faculty and students, providing various multimedia systems, equipment, and materials, and managing the security of computer networks and information.

Lifelong Education Center

The Lifelong Education Center is operating a wide variety of classes developed based on the needs of citizens including classes on the humanities, cultural refinement, everyday sports, culture and the arts for the purpose of improving the quality of life and promoting personal development for various groups including the local residents, workers, seniors and teachers, based on the education philosophy of Korea and the spirit of education of GINUE.

Education Research Center

The Education Research Center carries out research on elementary education and teacher education, in addition to conducting academic research for the advancement of elementary education and hosting and supporting various academic conferences and the Gyeongin Academic Forum.

Creativity and Character Education Center

To cultivate good character among the prospective teachers and help them better understand the situations of students requiring special consideration for education opportunities, the Creativity and Character Education Center develops student-led education volunteer programs, manages the completion criteria for such programs, and cooperates with the professionals and organizations in the field concerning creativity and character education.

Residence Hall

For the purpose of creating a suitable environment for students whose homes are far from the campus to concentrate on their studies, without having to commute long distances, there are three dormitory buildings (530 students) on the Incheon campus and two dormitory buildings (712 students) that can accommodate a total of 1,242 student residents. The dormitories are each equipped with a lounge, laundry room, gym, and various other amenities.

Education Training Center

This is a re-training center for kindergarten and elementary school teachers. It equips the trainees with specialized knowledge and basic qualifications required of teachers through vocational training, training for the Grade 1 & 2 certified teachers, principal qualification training, and special training programs entrusted by the State and municipalities.

Student Counseling Center

As a specialized center dedicated to promoting the potential of students and helping them lead a sound college life to achieve holistic growth, the Student Counseling Center offers comprehensive and systematic services including psychological tests and counseling in relation to adaptation to college life, schoolwork, interpersonal relations, and emotional problems.

Media Center

The Media Center plays a central role in voicing the general opinions of the students and delivering diverse information by publishing a university newspaper and magazine and airing on-campus broadcasts, thereby creating a university culture characterized by emotional and knowledge enrichment.

Distance Education and Training Support Center

The Distance Education and Training Support Center implements a distance training system to improve the education informatization of GINUE, which has been selected as a central university in informatization with the support of the Ministry of Education. It aims to foster elementary and secondary education teachers needed in the knowledge-based society of the 21st century and promote.

Attached Elementary School

The attached elementary school is dedicated to providing excellent education to students who are seeking a better future through diverse artistic activities, discussions, and debates. This is to attain the goals of nurturing students who enjoy learning, who live together in harmony with others, and who pursue happiness by carrying out student-oriented education activities that focus on upholding the basics and fundamentals.

Career Development Center

To help prospective teachers effectively prepare for the national teacher examination and promote the diverse mentoring programs aimed at fostering creative teachers, the Career Development Center invites in-service teachers and education specialists for special lectures and is partnering up with an increasing number of institutions for the mentoring programs.

Reserve Officers Training Corps

The Reserve Officers Training Corps (R.O.T.C.) offers R.O.T.C. trainings to foster potential candidates, counseling for current students on the military service, and military scholarships, in addition to recruiting and managing R.O.T.C. officers. Through these efforts, the R.O.T.C. is contributing to strengthening solidarity between the military and the school, creation of a sound school culture, and cultivation of good character among the prospective educators.

Admissions Office

The Admissions Office is in charge of university admissions and improving the admissions system. It is responsible for evaluating and selecting applicants, preparing evaluation criteria and materials, promoting admissions information, and providing consultation on admissions.

Support Center for Students with Disabilities

The Support Center for Students with Disabilities is committed to providing academic support for students with disabilities and improving the perception of the disabled. The center offers teaching learning programs that provide equal opportunities of education for students with disabilities; expands the scope of assistive tools; extends and improves the amenities for the disabled as a means to promote their welfare; and runs various students-initiated programs.

International Affairs Center

The International Affairs Center plans and operates a wide range of programs that help prospective teachers gain international competitiveness. Such programs include joint education practicums with the students from sister universities, overseas education volunteer work and academic exchanges, student exchanges and more, which serve to foster elementary education teachers with global competency, creativity and character demanded by information and knowledge-based society.

Center for Teaching and Learning

In order to contribute to the reinforcement of university education, the Center for Teaching and Learning conducts R&D projects on teaching and learning methods to support the research on effective teaching methods and the methods of improving and evaluating lectures. It also supervises programs related to writing instruction and academic counseling for students.

Archives

The Archives establishes and implements plans related to records management and control, and collects, organizes, preserves, and makes available the records worth preserving. Through these activities, the Archives provide meaningful information and culture to the members of the university and the local community.

Gender Equality Center

The Gender Equality Center runs psychological counseling and programs to prevent sexual harassment and violence to raise awareness among the members of the school and create a mature and sound university environment.





Campus Guide

Gyeonggi Campus

- | | | |
|-------------------------------|-------------------------------|---|
| 01 ◆ Gate, Gatehouse | 06 ◆ Teacher Education Center | 11 ◆ Yelim Dormitory (BTL Dormitory) |
| 02 ◆ Liberal Arts Building | 07 ◆ Gym | 12 ◆ Sports Field |
| 03 ◆ Natural Science Building | 08 ◆ Music Building | 13 ◆ Tennis Court for Faculty and Staff |
| 04 ◆ Student Cultural Center | 09 ◆ Administrative Building | 14 ◆ Tennis Court for Students |
| 05 ◆ Student Union Building | 10 ◆ Library | 15 ◆ Golf Course |

Incheon Campus

- | | | | |
|--|-----------------------------|--|---|
| 01 ◆ Gate, Gatehouse | 06 ◆ Student Union Building | 11 ◆ R.O.T.C | 16 ◆ Sports Field |
| 02 ◆ College Division / Information Education Center | 07 ◆ Music Building | 12 ◆ GINUE GIUM (Culture and Sports Complex) | 17 ◆ Basketball Court |
| 03 ◆ Library | 08 ◆ Science Building | 13 ◆ Dormitory #1 | 18 ◆ Tennis Court for Students |
| 04 ◆ Comprehensive Student Service Center | 09 ◆ Yejigwan / Auditorium | 14 ◆ Dormitory #2 | 19 ◆ Tennis Court for Faculty and Staff |
| 05 ◆ Liberal Arts Building | 10 ◆ Gym | 15 ◆ Dormitory #3 | 20 ◆ Golf Course |



GYEONGIN
NATIONAL
UNIVERSITY OF
EDUCATION



Sangsang^{Plus} University
(上上 ; 想像)

Editor Yunjeong Choi Research Professor Korea University

Incheon Campus (21044) 62, Gyesan-ro Gyeyang-gu, Incheon, Korea
TEL +82-32-540-1114 **FAX** +82-32-541-0580

Gyeonggi Campus (13910) 155, Sammak-ro, Manan-gu, Anyang-si, Gyeonggi-do, Korea
TEL +82-31-470-6114 **FAX** +82-31-470-6139